



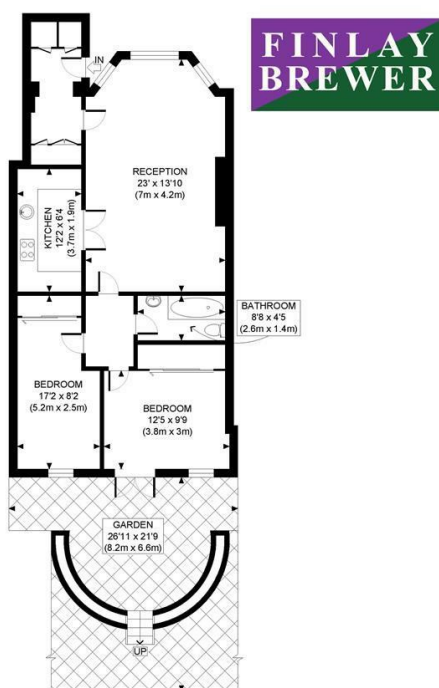
SINCLAIR ROAD W14





• 2 BEDROOMS • SPACIOUS RECEPTION • SEPARATE FITTED KITCHEN • CONTEMPORARY BATHROOM • PRETTY GARDEN • EXCELLENT STORAGE • AVAILABLE JULY • UNFURNISHED

Excellent 2 bedroom garden flat, with spacious reception, separate fitted kitchen contemporary bathroom and beautiful two tiered garden. Located a short walk from Westfield London and the transport links at Shepherds Bush and Olympia. Available July.



GROSS INTERNAL FLOOR AREA 823 SQ FT

APPROX. GROSS INTERNAL FLOOR AREA: 823 SQ FT/ 76 SQM

PROPERTY PHOTO PLANS co.uk
ONE STOP SHOP FOR PROPERTIES MARKETING

Whilst every attempt has been made to ensure the accuracy of the floor plan contained here, measurements of the doors, windows, rooms and any other items are approximate and no responsibility is taken for any errors, omissions, or mis-statement. This plan is for illustrative purposes only and should be used as such by any prospective client. The services, systems and appliances shown have not been tested and no guarantee as to the operability or efficiency can be given.

138 Shepherds Bush Road, London, W6 7PB
Tel: 020 7371 4071 lettings@finlaybrewer.co.uk